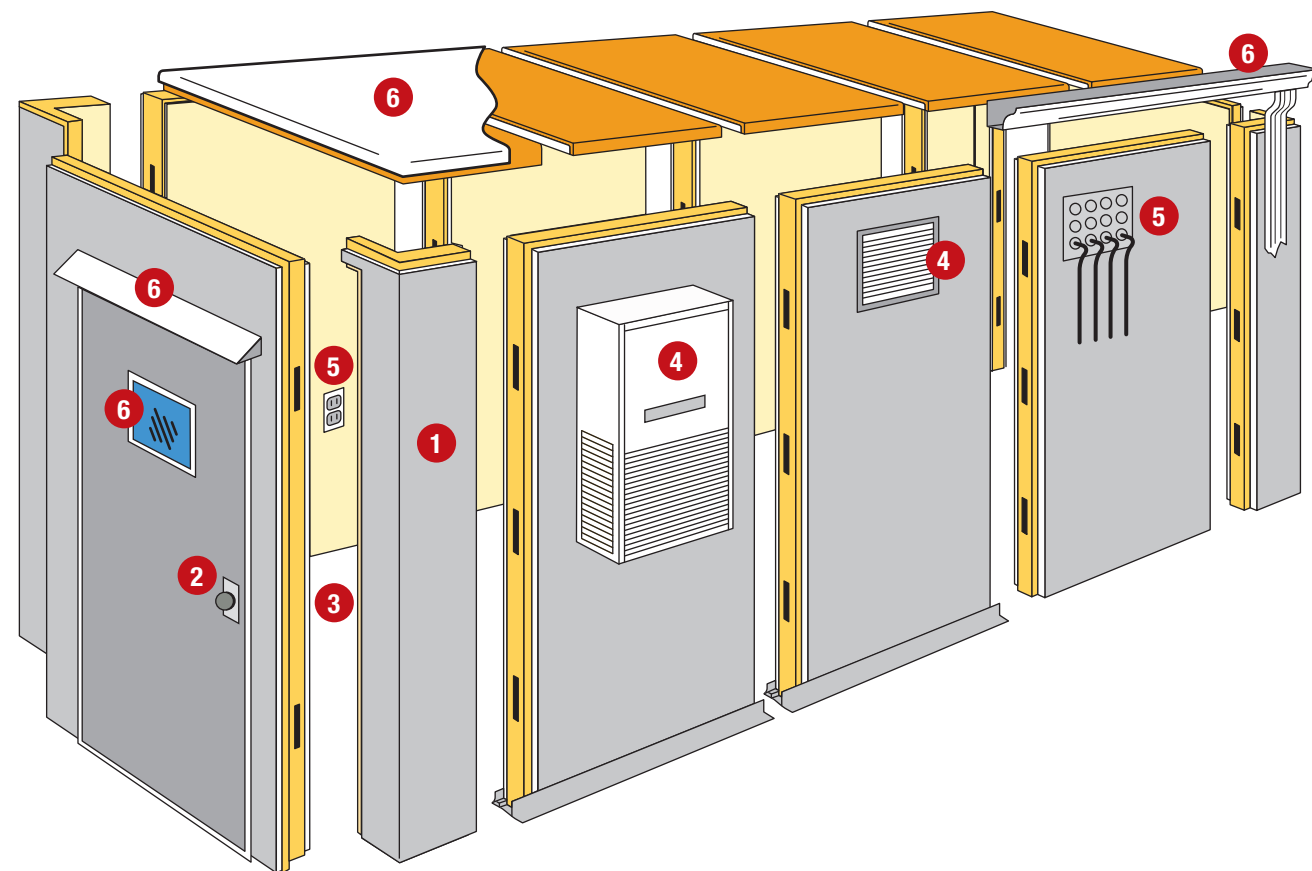


# Options to Customize Your Structure



Harford doesn't just provide a structure that meets your size and shape requirements. A vast array of choices and optional features let us create a custom solution that's exactly right. Your structure can have everything from interior equipment mounting panels to

an attractive custom exterior color. The most popular selections we offer are listed below. But if you don't see what you want, let us know. Chances are excellent we can supply it.

## 1 Surface Materials and Finishes.

- Interior and exterior can be the same or mixed.
  - FRP
  - Smart Panel (30-year warranty)
  - Galvalume
  - Stainless
  - Galvanized
  - Aluminum
  - Custom finishes and colors (Kynar has a 30-year warranty)

## 2 Doors

- 4"-thick fully insulated vault-type door
- 90-minute rated steel door and frame
- Standard or security hardware
- 1-3/4" steel commercial doors

## 3 Floors

- Standard to 600 P.S.F.
- Reinforced to 1200 P.S.F.

## 4 Climate Control

- HVAC systems and controls
- Exhaust vents

## 5 Power and Cabling

- Lighting packages
- Duplex outlets
- Cable ports, framed and trimmed

## 6 Convenience Features/Options

- Windows with wired glass or insulated multi-pane
- Access ramps (not shown)
- Vinyl membrane roof
- Gutter/downspout
- Entry rain shield
- Perimeter drip edge molding

### Plus

- Factory delivery
- Factory assembly and installation
- Factory supervision



*Our award winning Customer Service Team\* carefully tracks your order through every manufacturing stage to ensure on-time completion.*

## Uncompromising Quality Is One Key Feature In Every Harford Modular Structure

Uncompromising quality and non-stop attention to detail are the most important features you'll find in a Harford modular structure. Every structure we manufacture includes only the finest materials and is produced by a team that takes extraordinary pride in their work. Harford works extra hard to ensure on-time delivery with a sophisticated tracking system that monitors the progress of your order through every stage of manufacturing. The result is a structure that arrives on-schedule, assembles easily\*\* and will perform exactly as you expect today, tomorrow and beyond.

\* Harford has earned a coveted United States Senate Award for Customer Service Excellence.

\*\* Some structures are available fully assembled.

## Features of Harford Modular Structures

- ✓ Small (4 ft. x 6 ft.) to large (200 ft. x 200 ft. +) structures or individual panels available.
- ✓ Ten-year panel warranty.
- ✓ White polyester/thermoplastic roof cap membrane – reflects sunlight. Includes trim and/or flashing. Sizes up to 2,500 sq. ft.
- ✓ Panels available in different colors and textures (Kynar has a 30-year warranty).
- ✓ Stainless steel floor edge caps are standard.
- ✓ Tested for airtight closure.
- ✓ All metal cam-locks.
- ✓ Single shot expanding foam insulation.
- ✓ Non-CFC foam insulation blowing agent.
- ✓ Large selection of finishes/sizes/doors.
- ✓ Ninety/one hundred-fifty MPH wind rated (optional).
- ✓ Bullet resistant panels (optional).
- ✓ FRP panels (foamed-in-place, optional).
- ✓ Foamed-in-place OSB (optional).
- ✓ Other options and accessories available.

## First Class Customer Service

- ✓ Design/build capabilities.
- ✓ Full AUTO CAD capability.
- ✓ Submittals within two days.
- ✓ Snow load and live load calculations.
- ✓ Ninety-eight percent + on-time delivery.
- ✓ Manufacturing flexibility/specials.
- ✓ Computer generated on demand quotes and submittal drawings.
- ✓ Most quotations returned within twenty-four hours.



Panels Accepted For Use  
City of New York  
Department of Buildings  
MEA 108-83-M  
Harford  
Insulated Panel Structures



ICC-ES Report  
(ESR) Pending

**Harford Sales: 1-800-638-7620**

Brian Wright  
Inside Sales  
Phone: 731-847-5627  
Fax: 731-847-5387  
Email: brian.wright@manitowoc.com

Tony Copeland  
Director of Sales  
Manitowoc Business and Industry Channel  
Cell: 904-635-8495  
Email: tony.copeland@manitowoc.com

Website: [www.harfordmodularstructures.com](http://www.harfordmodularstructures.com)



©2009 Harford 2697B 6/09

# HARFORD

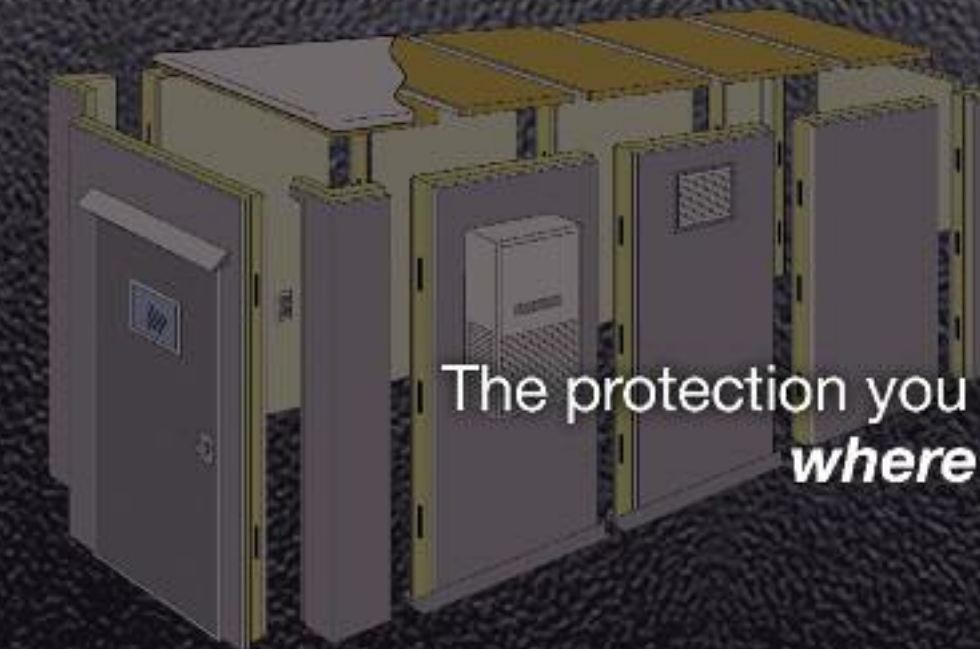


## Modular Structures

For Wireless Communications

Telecommunications, Utility,  
Scientific and Environmental Chambers,

Industrial and Custom Applications



The protection you need...  
*where you need it.*



# Harford Modular Structures provide... protection that's second to none

Harford modular structures provide fast, rugged and economical solutions for dozens of controlled environment applications. Our easy-to-transport and simple-to-assemble air-tight structures do everything from protecting valuable wireless communications equipment to isolating dangerous biochemical waste:

- Anti-Noise Structures
- Biochemical/Hazardous Waste Isolation
- Wireless and Telecommunications Shelters
- CATV and Electronic Equipment Shelters
- Industrial Process Rooms
- Laboratory Test Chambers
- Museum Artifact Preservation
- Temporary Personnel Shelters
- Utility Buildings
- And Many More...

## Harford Modular Structures (HMS)

Harford Modular Structures (HMS) is one of the largest panel manufacturers in the United States with facilities in Tennessee. We are a division of The Manitowoc Company and have been manufacturing panels for over thirty years.

## Harford Modular Structure

Harford Modular Structures feature a super insulated, pre-engineered, self-supporting, building panel. These panels are highly versatile and can be used in many commercial and industrial applications or be used to supplement existing product lines.

## Shelter and Protection Exactly Where You Need It

Even the largest Harford structure is quickly assembled from compact, lightweight panels that are easily transported to challenging access locations like roof-tops, building interiors, basements and off-road sites. Unlike pre-cast concrete or molded fiberglass buildings, no crane is needed to lift our modular structures into position. Assembly is faster and less expensive than traditional onsite construction.



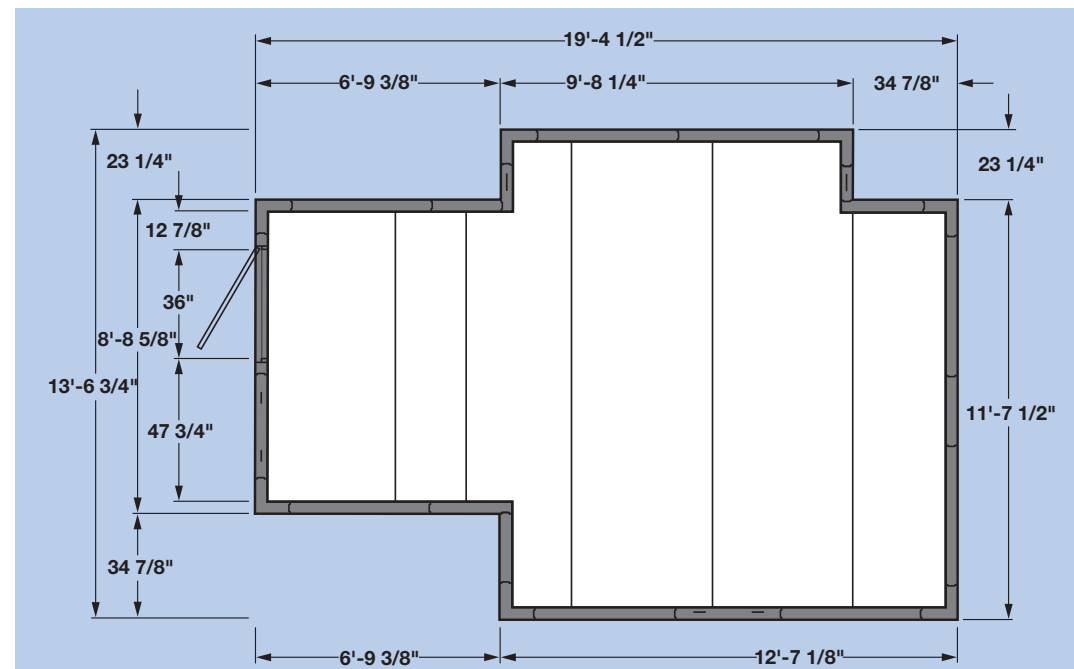
Our structures are ideal for housing wireless communications equipment on roof-tops.

*Our structures are ideal for housing wireless communications equipment on roof-tops.*

## Unlimited Design Flexibility

Our engineers will design the ideal modular structure for your requirements. You can receive everything from the most exacting dimensions and configurations to a wide selection of surface finishes and custom options. Harford structures are also easily expanded or moved to meet your future needs.

*A wide range of panel sizes are available to meet any design challenge.*



*We can supply any size modular structure.*

## Exceptionally Tough and Built To Last

Only first-class materials are present in any Harford product. Every panel is formed with double 90° bends for maximum rigidity. We use the finest CFC-free urethane insulation available because it yields an unmatched R-28 to minimize your ongoing energy expense. Seamless membrane roof covers create a weather tight seal for outdoor installations for the ultimate protection. You can also specify optional bullet resistant panels to protect your valuable



equipment or content from vandals. Other type roofs, such as sloped or gabled, are also available. And our quality promise is backed with an iron-clad 10-year warranty.



## Panels

Double ninety degree bends provide maximum panel rigidity and help secure gasket in-place. Panel thickness ranges from two inch to six inch.

Standard panel is four inches thick. Special order panels available upon request.

Panels are tongue and groove configured for added flexibility. Add or subtract panels at a later date to accommodate your future structure needs.

## Exceptional Cost Savings

Harford structures are significantly less expensive than heavy concrete shelters or wood buildings constructed onsite. They ship light, don't require costly skilled labor or cranes to install and deliver ongoing energy savings year after year. In fact, when you tally all the money you save, you'll find that our structures cost a fraction of what you would pay for alternative products.

## Insulation Rating

Each panel shall be filled with rigid "Foamed-In-Place" urethane having a thermal conductivity (K factor) of 0.147 BTU/hr./ft per degrees Fahrenheit/inch and an overall coefficient of heat transfer (U factor) of not more than 0.03675. "R" factor shall be 28 or greater. Insulation shall have a 97% closed cell structure. Overall thickness shall be 4". Fire hazard classification is a flame spread rating of 25 or less and certified with UL label. Factory Mutual approved and listed. Urethane insulation will be injected in place to a minimum density of 2.2 pounds per cubic foot, (yielding a compression strength of 30 psi). No CFC's shall be used as an expanding agent in the manufacturing process.

## Dimensional Specifications

Standard Harford Structure dimensions based on nominal 1 ft. = 11-5/8 inches. Actual size structures 1 ft. = 12 inches also available.

## Assembly Is Fast and Easy

Most Harford structures can be fully assembled by a two person crew in a single day or less. And you don't need skilled craftsmen to do the work. Just make sure there's a concrete slab or other prepared flat surface ready to serve as a base. Your shipment from Harford will include easy-to-follow plans and installation instructions in addition to the components needed for rapid assembly of a complete structure.

You don't have to fumble with dozens of nuts and bolts to assemble a Harford structure. Strong cam-type locking mechanisms are precisely built into each panel to let you quickly join panels in perfect vertical and horizontal alignment. We even supply a hex wrench to engage the cam locks. Tongue and groove panels with foamed-in-place gaskets provide a uniform air-tight seal.

## Contact Us For A Free Consultation and Quote

Our sales and engineering teams are ready to serve you. We'll listen carefully to your needs, propose a structure that will achieve your objectives and provide both a CAD drawing and firm quote.



You'll Find Our Structures Everywhere from antenna sites to pharmaceutical plants.